

2016



# SAFETY SOLUTIONS FOR NETWORK ELECTRICIANS





SFE International is a marketer of electrical field test and safety equipment; Our products are intended for technicians and teams who build, maintain and operate power systems in a high-risk environment for low, medium and high voltage.

The spirit that drives us is to improve safety electrical workers :

Integrating safety into the process

Improving working place efficiency

Including sustainability of safety solution

For these reasons, we are in permanent process of innovation listening to the people field.

### **Our main ranges of products and brands are as follows :**

- Personal Protective equipment --> Sibille Safe
- Detection and phasing --> Fameca
- Bags --> CSA production
- Complete By-Pass systems and connectors for temporary supply --> Technowill
- Cables preparation tools --> Alroc
- Low voltage insulated/insulating tools --> Sibille Outillage
- Measure and test accessories --> Electro PJP
- Cutting and cable identification --> Mos industrie
- Earthing and sticks --> Fameca
- Hydraulic tools for LV, MV and HV networks --> Mos Industrie
- Medium and high voltage Live working tool --> Lerc TST
- Earthing and lightning protection --> Maltep

## Our brands



All our factories are based in France



## PERSONAL PROTECTIVE EQUIPMENT

Insulating gloves	4
Overgloves	4
Arc flash protection	5
Electrician's helmet	6
Insulating mat	6



## INSULATING - INSULATED TOOLS

Rescue / electrical safety kit	7
Bags	7



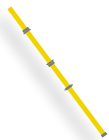
## INSULATING - INSULATED TOOLS

Insulated tools	8
Screwdrivers	8



## SHUNT AND REPOWERING

Ts44 tp67 by pass/accessories	9
Temporary supply	9
Road shell	9



## INSULATING - INSULATED TOOLS

Penta pole	10
Pdd	10
Tt7415	10



## NO VOLTAGE TESTING AND CERTAIN IDENTIFICATION

Fc2310v	11
Vector	11
Tag780	11
Hdcv	12
Picoup 400	12



## EARTHING AND SHORT-CIRCUITING

Pimt	13
Nevers	13
Ey322ng	13
Dmtbttr	14
Dmcctbti	14
Magnetic smape	14



## NETWORK CONTROL SYSTEMS

Fc3000x	15
Tag5000s	15
Tohm-e	16
Wheel-e	16



## CABLE PREPARATION TOOLS

Prg3	17
Pg3ec/2020	17
Cwb/18-60- fep	17
Mf3np/60	18
Asc25r1	18
Bmrmd1	18

## INSULATING GLOVES



### USE

Protection against electrical risks

### RANGES

#### LATEX

Provide high dielectric performance. They must be used with leather glove covers for mechanical protection.

#### COMPOSITE

gloves offer superior mechanical protection against punctures and tears. They eliminate the need for overgloves.

#### COMPOSITE WITH ARC FLASH PROTECTION

provide electrical insulation and heat protection from an electric arc.

#### SMART FEATURES

For better differentiation of your company :

- Marking of company logo
- Latex gloves also available in different colors (beige, red, black)



## OVERGLOVES



### USE

Assure mechanical protection of Latex gloves



- > New shape for better fitting regarding our insulation gloves
- > Ruled edge for an easier fitting
- > Water repellent

### SMART FEATURES

complete range designed according to insulating latex gloves



## ARC FLASH PROTECTION

A selection of high quality garments that address ergonomics and style for uncompromising protection. We offer complete solution for Arc-Flash protection, from head to toe :

- Arc-Flash clothing from 10 cal/cm<sup>2</sup> to 40 cal/cm<sup>2</sup>
- Daily wear or switching wear
- Safety helmet with Arc-Flash face shield with balaclava, or Arc-Flash hood with hard hat and fabric
- Combined protection for hand : insulating + mechanical + Arc-Flash protection with one glove,
- Safety footwear with insulating outsole, 100% non metallic





## ELECTRICIAN'S HELMET



### USE

Electrician's hard hat with arc-flash protective shield



- > Improves shock absorption thanks to an exclusive crash box technology
- > Shield has only two positions, lowered or raised : no unsecured intermediate position
- > Highest optical quality, compatible with primary glasses

### SMART FEATURES

for better differentiation of your workers or company, hard hats can be personalized with different crash box colors, front or side lamps, replacement shield, etc.

## INSULATING MAT



### USE

In addition to the PPE, the mat insulates the worker from the ground to avoid him being crossed by electrical current in case of direct contact or pace voltage



- > Use and maintenance rules appear on each mat
- > Ultra lightweight mat

### SMART FEATURES

The class of mat will be chosen according to the maximum nominal voltage of the network



## RESCUE / ELECTRICAL SAFETY KIT

### USE

The Electrical Safety Kit allows to assist people in presence of electrical hazards, up to 25 kV network with model VES25 or up to 36 kV network with model VES36.



- > an electrical safety kit for field operations
- > compact
- > mobility
- > tough
- > high visibility
- > optimised storage



### SMART FEATURES

Look at the illustrated instruction sheet to understand quickly how to use the kit

**CSA** PRODUCTION  
COMPAGNIE DES SACS ET ACCESSOIRES

## BAGS

We offer a complete range of bags. Our range includes leather or canvas bags in different shapes, colors and for various uses

### SMART FEATURES

For better differentiation of your company the bags be personalized (marking, colors)





## INSULATED TOOLS

### USE

For regular electrician's work



> Thanks to a demanding choice of quality forged materials, our products are exceptionally long-lasting

### SMART FEATURES

as soon as the second white layer appears, the tool must be changed



## SCREWDRIVERS

### ROTOLINE : THE NEW RANGE OF INSULATED 1000V SCREWDRIVERS

### USE

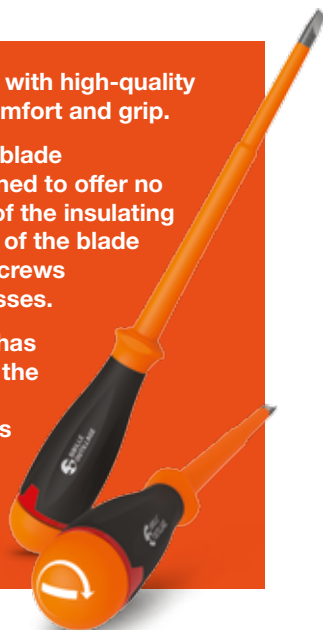
For regular electrician's work



- > Ergonomic handle with high-quality soft coating for comfort and grip.
- > "Smart Diameter" blade  
The blades are turned to offer no excess thickness of the insulating material at the top of the blade in order to reach screws set in narrow recesses.
- > Each screwdriver has a coloured ring on the handle. The ring colour corresponds to the type of screwdriver blade, allowing a quick identification.

### SMART FEATURES

Think different, have an ergonomic approach with a screwdrivers



### 4 NM TORQUE LIMITING SCREWDRIVER



### USE

Pre-set 4 Nm torque screwdriver. For a precise tightening of electricity meters and circuit-breakers terminals



- > A thick handle for a firm grasp,
- > An articulated lever arm with automatic return at its end. When the lever arm is bent, the operator can develop higher tightening torque to make their work more comfortable.
- > Two tightening positions:
  - Lever arm straight for quick approach tightening
  - Lever arm bent for force tightening

### SMART FEATURES

Insufficient tightening leaves play between parts which can lead to poor conductivity, overheating and equipment damage. Excessive tightening can damage connections and stripping threads leading to installation failure or overheating. This risk of overheating due to incorrect tightening is significant and may ultimately give rise to fires.





## TS44 TP67 BY PASS AND ACCESSORIES



### USE

Equipment for by passing installation to be worked on



- > IP2X protection of the clam to avoid short circuit
- > Tightening handle designed to use with gloves hands
- > First clamp to provide an IP2X measuring socket

### SMART FEATURES

connect your measuring devices with a wide range of clamps designed for heavy currents

## TEMPORARY SUPPLY



### USE

maintains the LV supply by setting up a temporary LV network from a generator set or other network



- > Complete, modular system
- > Extra-flexible cables on reels
- > Range designed for all-terrain uses

### SMART FEATURES

connect your measuring devices with a wide range of clamps designed of heavy currents

## ROAD SHELL



### USE

high-strength cable protectors



- > Adapted to extreme temperatures depending on specific needs
- > Adaptable to all types of terrain, including uneven ground

### SMART FEATURES

select the appropriate reference according your climate condition (3 models : desert / polar / temperate)



## PENTA POLE



### USE

Telescopic insulating stick with pentagonal perfectly suits for :

- operation of disconnect switches,
- use with voltage detectors,
- application of LV/MV earthing devices,
- maintenance work (tree trimming, conductor cleaning ...)



- > Ergonomically designed grip thanks to its pentagonal shape that fits the palm of the hand
- > The pentagonal shape prevents the tubes rotating on each other
- > Very lightweight stick : requires less effort during use
- > Very good rigidity providing optimal control during your operations
- > The sections are locked together automatically when the stick is extended by a large and very robust red button. Unlocking to retract the stick simply involves pressing the button, with no risk of trapping finger or gloves in the mechanism

## PDD



### USE

Discharge stick



- > Insulating stick (telescopic or with elements) equipped with a discharge resistor, with or without an earthing cable and an earthing clamp (ref. PTS38).
- > Also available without resistor.

## TT7415



### USE

Hot stick tester, checks the insulating quality of yours poles, rods and ropes.



- > Full internal self-test which tests all active parts of the tester.
- > Self test with external test tube.
- > Rechargeable battery operated device.
- > Compact and robust.
- > 100% safe device => no danger for the user
- > Less than 5 minutes to test your stick on the field

FAMECA

## FC2310V



## USE

Operation simplified - Information reliability - Safety for operator and installation



- > no need to remove the earth for the operation
- > Secured identification signal concealed in the conductors. No signal on shielding and earthing circuits
- > Cable identification is no more an exception for the safety procedure (keeping the earthing connected)

## SMART FEATURES

Make the 3 phases conductor ID before and after the cable cutting

## VECTOR



## USE

This device is designed for the proving dead operation. It will detect any nominal voltage present on networks or substation and must not detect induced voltages.



- > Accuracy Setting and test on real voltage
  - > Continuous self-test all the time the green light is on.
  - > Bright visual indications on bottom and sides
- Easy battery replacement

## TAG780



## USE

device designed proving dead



- > Ergonomics designed for easy access to confined points of contact
- > High luminosity display for reading in bright sunlight
- > Device suitable for test conditions with IP65 index, CAT IV 600 V
- > Operates up to 1 000 V, suitable for wind farms and renewable energy sources

## SMART FEATURES

choose test probes adapted to your specific needs



## HDCV

### USE

Single-pole Voltage Detector for Direct Current, HVDC-H for 150-800 kV, and HVDC-L for 20-150 kV is designed to check absence or presence of nominal voltage on high voltage Direct Current, DC, installations, both in switchgear and on lines.

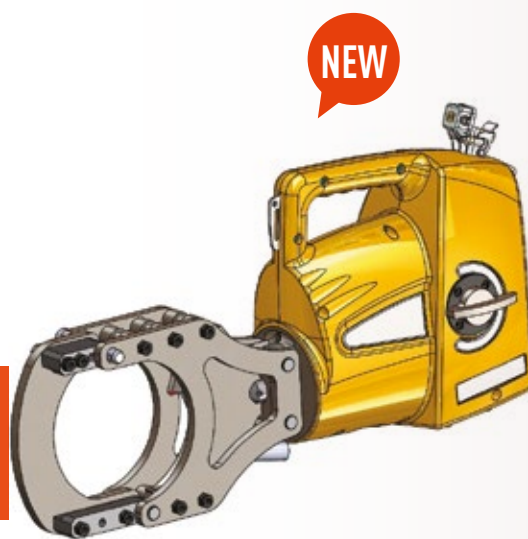


- > Acoustic signal and red flashing light indicate voltage.
- > Built in test function with test button provides checking of all electronic and battery level.
- > Green light indicate that the unit is ready (the unit is ready for measurement with or without self-test – permanent stand-by mode).
- > Acoustic signal and red flashing light indicate voltage “live line”.
- > Solid green light proves dead.
- > The voltage detector is made of impact resistant polycarbonate.
- > Active and passive electrodes made of aluminium.

## PICOUP 400

### USE

After the operation to pre-identify MV cables off line, the PICOUP allows you to test for absence of voltage on the cable. If there is a voltage, the PICOUP limits the short circuit by creating a single-phase fault. The cable can then be cut in total safety.



- > Unlike hydraulic cable cutters which create a phase-to-phase fault, a phase-to-ground fault divides
- > The short circuit energy is decreased by 10

### SMART FEATURES

In the event of a fault, only the PICOUP blade needs to be changed

FAMECA

## PIMT



## USE

Earthing and Short-Circuiting System for MV substations



> Lightweight, compact clamps. With the AP end fitting, they are fitted with an anti-rotation brake to prevent them rotating during installation.

## NEVERS



## USE

single operator earth system from the ground



> Ergonomic designs with two functions in one sticks, proving death and earthing  
> Perfectly suited to work in rural environments

## SMART FEATURES

All the components are available as spares

## EY322NG



## USE

The earth and short-circuit device EY3221NG is designed for bare MV overhead lines with 3 cables. Installation from the pylon or from the ground.



> Light  
> Fast and easy to use  
> Large capacity of tightening : Ø 3 to 32 mm



## DMTBTTR



### USE

Portable and rigid device for short-circuiting and earthing a panel board or cabinet in a LV network, equipped with three false fuses NH123. The device is made for fuse-switch-disconnectors according to IEC/EN 60947-3.



- > - The device is portable.
- All components necessary for short-circuiting and grounding are all in one rigid set.
- The implementation is easy and requires only two things : the fixing of the earth clamp and the introduction of the device in the cabinet.

## DMCCTBTI



### USE

Earthing and short-circuiting device for LV switchboards in industry



> Different type of connection points possible (round bar, flat bar, hexagon ...)

### SMART FEATURES

Use adaptation to connect easily to LV panel boards

## MAGNETIC SMAPE



### USE

Earthing device design to follow strictly the earthing process during the setting up and removing to avoid to be inserted in the earth circuit due to the height level of induce voltage. This product is particularly adapted to the hard conditions. Very high voltage earthing device with magnetic key interlocking system between phase and earth clamp



- > Secured interlocking system without holes and energy
- > The key cannot be copied
- > Robust, reliable and easy to use solution

### SMART FEATURES

An innovative and unique French product :

- No holes in opposition with the basic key system
- International patent solution

## FC3000X

### USE

Simple to use, this device enables a technician working alone to quickly identify and check the substation, the feeders (from 6 to 12 feeders) and the phase supplying each customer connection, in seconds !



- > Simple to use
- > The safety of the operator and the installations is guaranteed
- > Reliable
- > The LV feeder and phase identifier operates on all types of cables, whatever the environment
- > A robust, complete practical kit designed to last



### SMART FEATURES

Device can be used by a single operator

## TAG5000S

### USE

Wireless phase comparator for three phase network with nominal voltages from 4 kV up to 36 kV



- > Light and compact unit for overhead lines
- > Safety probes for indoor use
- > Positive indication for "in phase" conditions
- > No hazard due to a cable link
- > Increase distance of operation (25m plus)
- > Possibility of phasing through walls (inside outside)



## TOHM-E

### USE

Earth loop tester  
Socket tester



- > Measuring become :
- > Simple : Test your electrical installation in a single step by directly connecting in power outlet
- > Quick : the displaying is instantaneous
- > Precise : Impossible to make a mistake :  
blue screen : all is right  
red screen : earth default or wrong wiring
- > Flexible : the rotating connecting head offers reading in any situation



NEW

## WHEEL-E

### USE

Teste and measure the continuity the resistance of protective conductor s and equipotential bonding.



- > Keep your hands free
- > One single button for all the functions
- > Blue / red backlight to test at first glance whether OK or not
- > 30 meter-long wire to operate far from the equipotentiality reference



NEW





## PRG3

### USE

Allows to remove the outer sheath of the cable by doing a circular and longitudinal cut on the sheath.



- > 3 different longitudinal cutting depth in one interchangeable cutting head
- > Quick set up of the cutting head on the plier
- > The interchangeable cutting head fit



## PG3EC/2020

### USE

tool for live working. It is used for stripping low voltage cables



- > The shape of the tool guarantees outstanding cutting quality
- > The stripping operation is three times quicker than with a knife and 100 times safer
- > The insulating materials eliminate any risk of short circuits



### SMART FEATURES

No presetting. It is self-adjusting

Quick and simple to use but guarantees a good job everytime

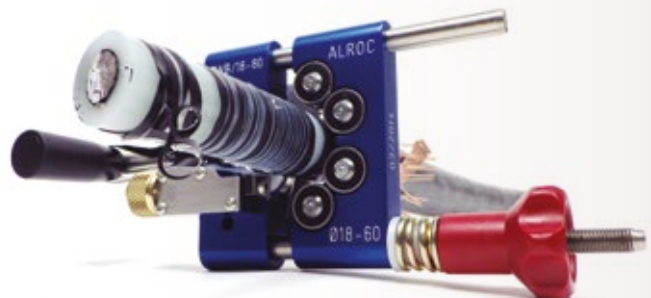
## CWB/18-60- FEP

### USE

CWB/18-60 tool allows to remove the bonded semiconductor while realising a chamfer in a clean and swift manner.



- > Removal of the bonded semiconductor without requiring lubricant.
- > Very smooth finish on the insulation.





## MF3NP/60

**USE**

Multi-function tool for outer sheath, non peelable semi-conductor screen and insulation



- > Tuning of the step of the tool (width of the chip sheath)



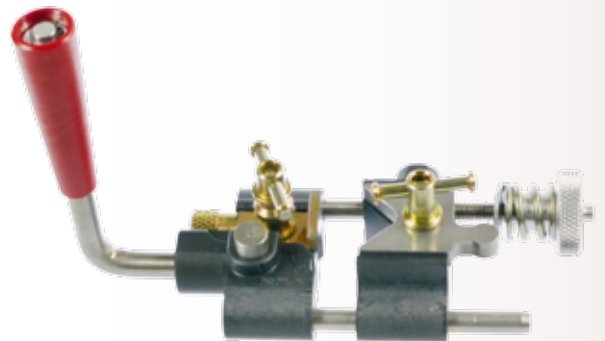
## ASC25R1

**USE**

Tools for bonded semiconductor with chamfer



- > Holding plate for a good steadiness of the tools on the cable for those with a remaining length of 25 mm / .98 inch and for P/N ASC30R2
- > Quick set up of the handle
- > Preset position of the blade to 0.7mm/.03 inch (thickness) on ASC25F



## BRMRD1

**USE**

BRMRd1E tool cuts insulation from MV cables and allows to obtain an insulation straight cut with the BR stop



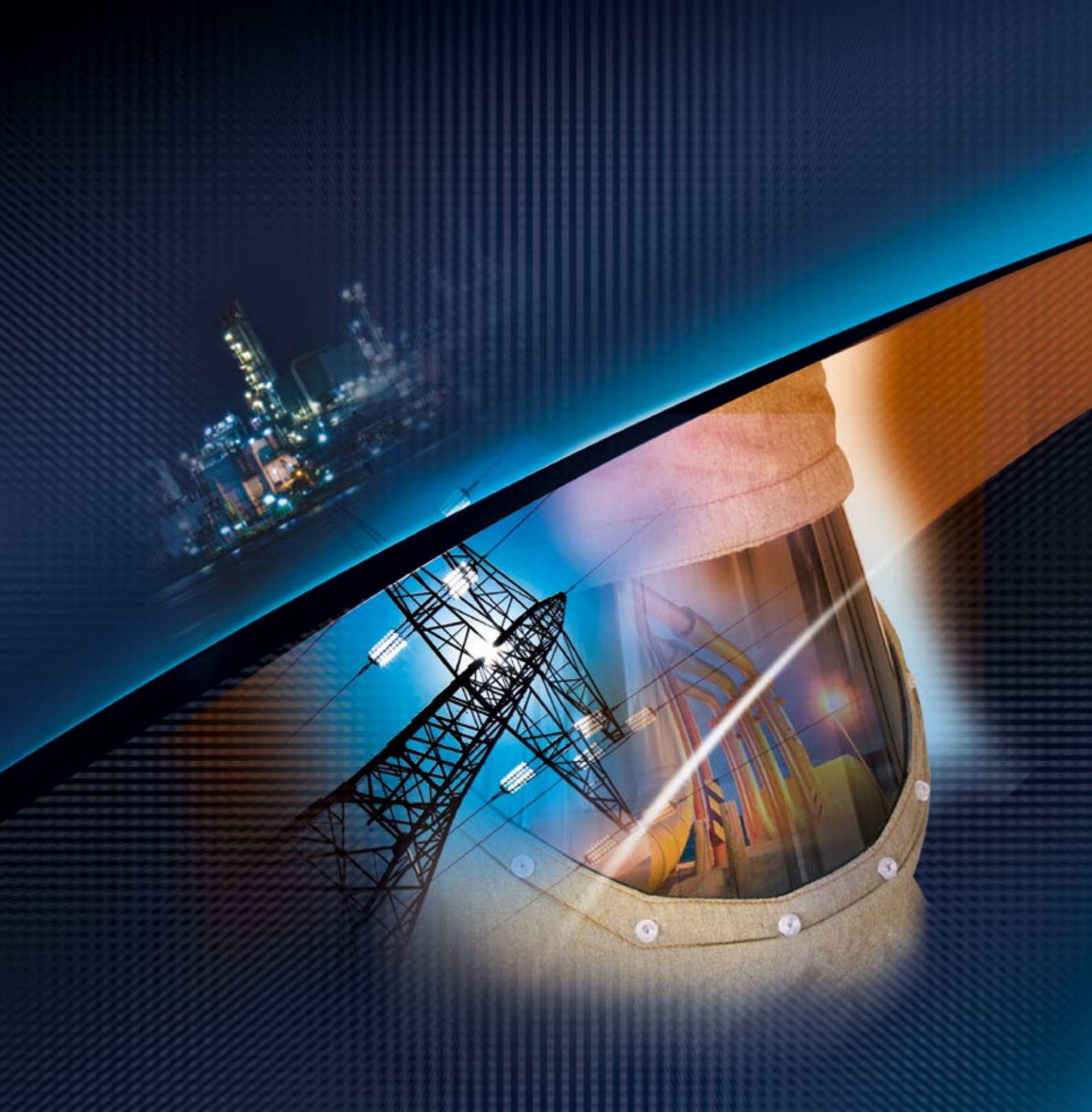
- > Fast disassembling handle



# Discover our website



[www.sf-electric.com](http://www.sf-electric.com)



815B, Chemin du Razas - ZI Les Plaines  
26780 Malataverne  
Tél. : 04 75 90 58 00 - Fax : 04 75 90 58 39  
contact@sf-electric.com - www.sf-electric.com